

At Play 2012

Nyeema Morgan, *Gamescape*,
2007, mixed paper media,
board games, matte board,
inkjet print, 33 x 46 x 46cm.



AM Bruno, Leszek Blyszczynski,

Andi Chapple, James R Ford,

Linda Francis, Flora Gare,

Rebecca Glover, Nick Kennedy,

Philip Lee, Dan Lovelace,

Sousan Luqman, Este MacLeod,

Nyeema Morgan, Martina O'Shea,

Katherina Radeva, Ann Rapstoff,

Kirsty E Smith, Guy Tarrant, Cally Trench,

Kim Walker, Mary Yacoob.

South Hill Park Arts Centre

Bracknell

21 April–17 June 2012

New Ashgate Gallery

Farnham

8 June–14 July 2012

OVADA

Oxford

29 June–5 August 2012

At Play 2012

At Play is an invitation to the spectator to play.

At Play 2012 re-creates a sense of what it is like to be a child at play.

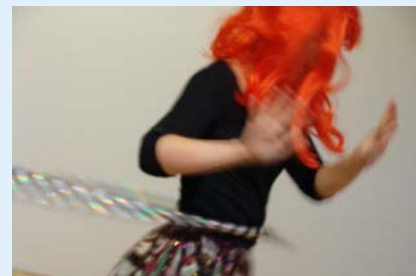
As a participatory exhibition, it encourages viewers to gaze, remember, touch, explore, trust, think, laugh, peer, concentrate, join in, bend down, take a chance... and play. It explores the way that play can be free and spontaneous or bound by rules and conventions – as with board games and sport. The exhibition considers ideas about rules or the lack of them, and the spirit of the Olympics in the year that the summer Olympics come to Britain. *At Play* also supports artists in making participatory, engaging and interactive work in a variety of art forms.

At Play 2012 is a project in partnership with the New Ashgate Gallery, Surrey, South Hill Park, Berkshire, and OVADA, Oxfordshire, exploring concepts of play and participation. *At Play* is a collaboration, produced and curated by Dr Outi Remes and Cally Trench.



Guy Tarrant, *Girls Cabinet #1* (2010)

Katerina Radeva, *Kitty has no pity - the art of not giving up* (2009–2011)



At Play artist talk Guy Tarrant

20 April, 5.30–6.30pm
£10, Conc £8, Tall Hall
Bookings: 01344 484123

Guy Tarrant's artwork challenges the formal processes of art. Guy's first concerns dealt with questioning the very nature of artistic authorship and professional practice. As Guy became more involved in teaching he shifted his attention to addressing the education process itself. He has become increasingly concerned with focusing on the role and responses of participants' behaviour.



Kim Walker, *Do I come from an imaginary place that's based on the earth and do I wear a hat* (2010), video, double-channel, floor-to-ceiling projection

SOUTH HILL PARK ARTS CENTRE

21 April – 17 June

Leszek Blyszczynski, Andi Chapple, James R Ford, Flora Gare, Nick Kennedy, Philip Lee, Dan Lovelace, Sousan Luqman, Nyeema Morgan, Martina O'Shea, Katherina Radeva, Guy Tarrant, Cally Trench, Kim Walker and Mary Yacoob.

Private view

Friday 20 April, 6.30–8pm

Live performances during the private view

Katherina Radeva, *Kitty has no pity – the art of not giving up*, throughout the private view + 8.00pm, Watts Room

Philip Lee, *Slip and Sponge*, throughout the private view

Andi Chapple, *Andi Chapple and Musicians*, throughout the private view

NEW ASHGATE GALLERY

8 June – 14 July

AM Bruno, Linda Francis,
Flora Gare, Este MacLeod,
Kirsty E Smith and Cally Trench.

Private view
Friday 15 June, 6–8pm

Events

Bookings: 01252 713208
gallery@newashgate.org.uk



Cally Trench, *Vegetable Thieves* (2010), mdf,
acrylic paint, paper, fimo

Researching playfulness Monday 25 June, 6.30–8.30pm

Research paper

At Play: Curatorial notes about playfulness, Cally Trench and Dr Outi Remes, curators of *At Play*

At Play artists' talks:

Kirsty E Smith discusses participation and responses that came as a result of her questionnaire into participation. The artist also introduces Frillip Moolog, the artist's alter ego: a dialogue between two of her beings.

Este MacLeod discusses two components of a current body of work, her journey of discovery through playing with disconnected and obsolete objects that once belonged, or had a purpose. Este also explored the stories of three South Africa Olympic athletes who participated in the Olympics between 1948 and 1960.



Kirsty E Smith, *Boris* (2008), mixed media sculpture

Crafts at play workshop with Jane Tadrisk Thursday 7 June

Crafts At Play workshop with the Sandy Hill Bungalow and the Opportunities: the Lone Parents Group. Artist Jane Tadrisk will be working with a community group to explore the ancient Olympics as a starting point for artwork that will be displayed as part of the *At Play* exhibition in the New Ashgate Gallery.

At Play family activity box Saturday 23 June, 10.30am–12noon and 2–3.30pm

Interactive workshops with artist and educator Gemma Cumming

Board games with artist Cally Trench Monday 9 July, 4.30–7pm, £5

Learn about the social history, design and conventions of board games, try out some old favourites and unfamiliar games, and devise and design a board game of your own. Workshop for adults and older children (minimum age 10). Booking essential, places are limited.

OVADA

29 June – 5 August

Leszek Blyszczynski, James R Ford,
Linda Francis, Flora Gare, Rebecca Glover,
Nick Kennedy, Philip Lee, Dan Lovelace,
Sousan Luqman, Nyeema Morgan,
Martina O'Shea, Ann Rapstoff,
Guy Tarrant, Cally Trench
and Mary Yacoob.

Private view

Friday 29th June, 6–8pm

Live performances during the private view

Philip Lee, *Oxford Slip*, 7.30–8pm

Dan Lovelace, *The Alcatraz Button Toss*

Ann Rapstoff, *Margins of Play*,
throughout the private view

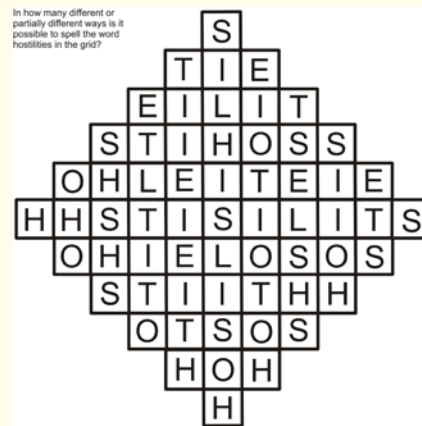
Events

Bookings: info@ovada.org.uk

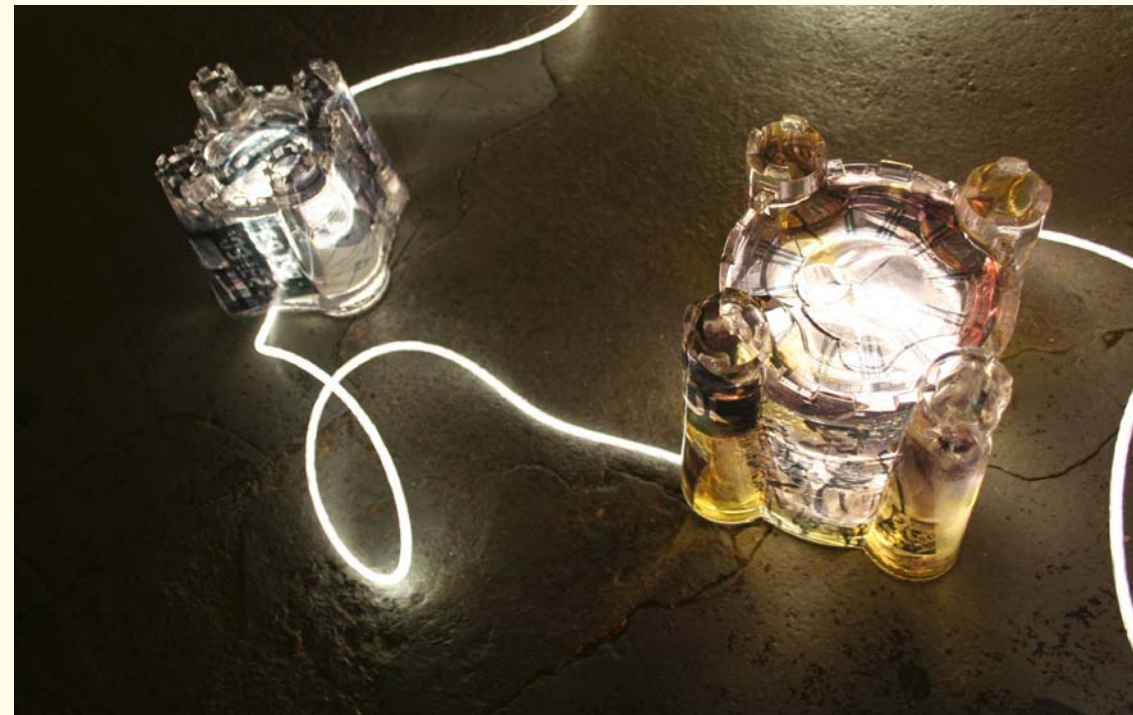
Experimental ideas sharing session

See www.ovada.org.uk
for date and time

Artists will explore the theme of 'play' by presenting a short performance, idea, interaction, game, talk or other participatory event to a live audience. Each slot will last ten minutes followed by five minutes for response and questions. All welcome. If you would like to be a member of the audience, please RSVP to: info@ovada.org.uk



Sousan Luqman, *Hostilities* (2008),
digital print



Flora Gare, *Castles in the Air* (2010–2012), resin, film, fibre optic cable, dimensions various

Critique session

Friday 29 June, 3–5.30pm

The session explores the work by *At Play* artists in a friendly, constructive environment with short presentations by the artists and opportunities to ask questions and make comments. The general public is welcome to attend.

During *At Play* at OVADA, exhibiting artists will deliver hands-on workshops for local youth groups that explore and challenge the idea of 'play'. Follow the progress of these collaborations at www.ovada.org.uk Booking required.

At Play family activity box

Saturday 14 July,
10am–12pm and 2–4pm

Interactive workshops at
OVADA with artist and
educator Gemma Cumming.

At Play 2012



South Hill Park

Ringmead
Bracknell
Berkshire RG12 7PA
01344 484123

Open: Thursday to Saturday 1–8pm
and Sunday 1–5pm

www.southhillpark.org.uk



New Ashgate Gallery

Waggon Yard
Farnham
Surrey GU9 7EH
01252 713208

gallery@newashgate.org.uk

Open: Tuesday to Saturday 10am–5pm

www.newashgate.org.uk



OVADA

14A Osney Lane, Oxford, OX1 1NJ
07875 722050

info@ovada.org.uk

www.ovada.org.uk



LOTTERY FUNDED

Foundation for Contemporary Arts



At Play 2012 is supported by Arts Council England, the Foundation for Contemporary Art, New York and Farnham Town Council.

We would also like to thank Gemma Cumming; Diana Healey; Laura James; Ingrid Jensen; Carol McFarlane; Lucy Philips; Roger Pryn; Kate Ratcliffe; Jonathan Roe; Robert Harvey at B&B Autos, Dagnall; University of Westminster; and Sandy Hill Bungalow.

Design: www.janeglennie.co.uk